



---

**S-BAND OUTDOOR 1:1 REDUNDANT  
SOLID STATE POWER AMPLIFIER**

- **1:1 REDUNDANT S-BAND SSPA**
- **CLASS “AB” OPERATION**
- **OUTDOOR OPERATION**
- **FULL REMOTE M&C**
- **HIGH RELIABILITY**

This solid state power amplifier is intended for use in satellite communications systems as uplink SSPA. It is to be installed directly to the antenna. The outdoor construction protects the amplifier against harsh environmental conditions. It consists of two identical amplifier plus a redundancy switch and control circuitry. The SSPA can be fully remotely monitored and control via the built-in RS-485 port.

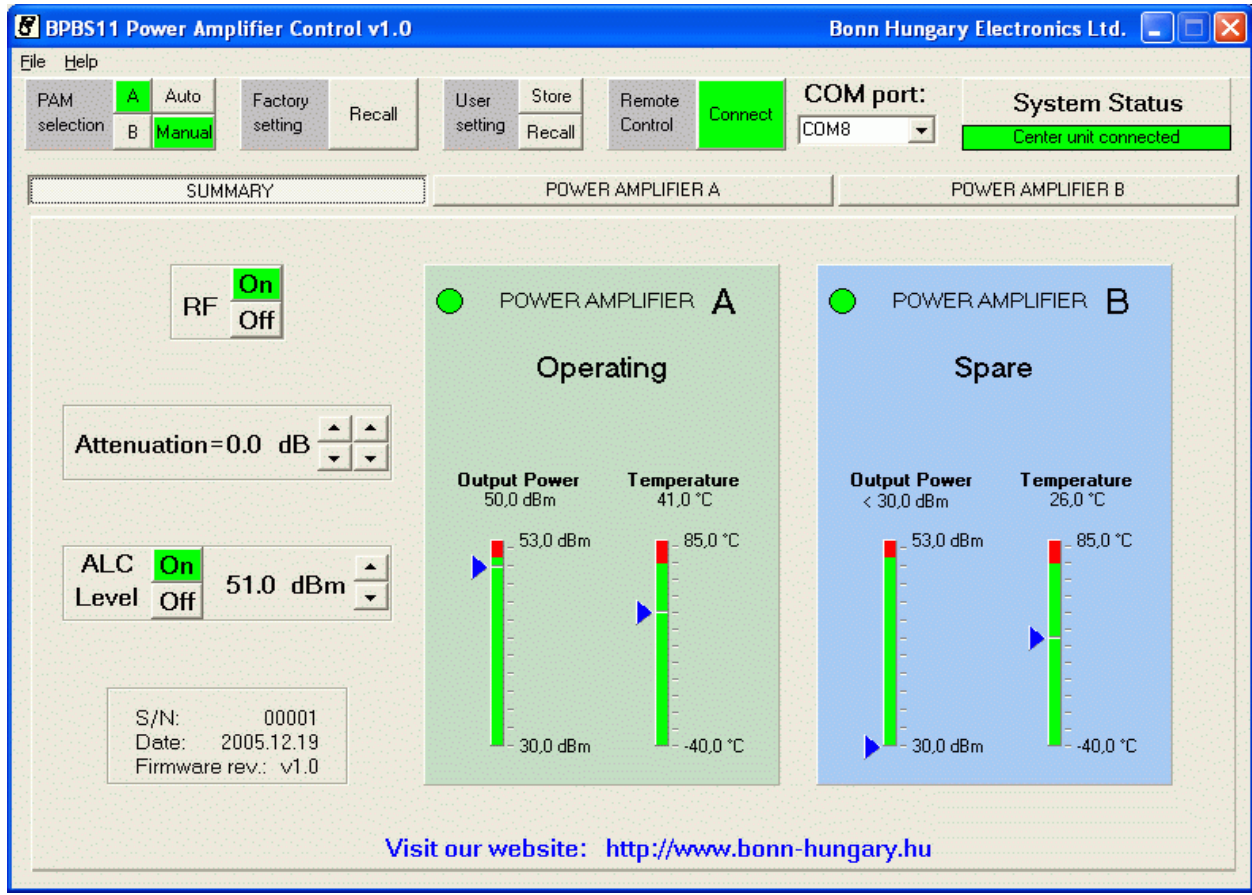
**Electrical characteristics:**

Frequency Band	2020 – 2120 MHz
RF Output Power	50 dBm @ P1 dB min.
Power Gain	75 dB min.
Gain Slope	± 0.1 dB/10 MHz max.
Gain Flatness	± 0.5 dB
Output Power Stability vs. Temp (ALC ON)	± 1 dB(-40°C to +60°C) max.
ALC Control	20 dB min.
AM/PM Conversion @ P1 dB	3°/dB max.
In/Out Impedance Nominally	50 Ohms
Input VSWR	< 1.3 : 1
Output VSWR	< 1.4 : 1
Output Noise In Band 2.2-2.3 GHz	< -125 dBm/Hz without filter
Gain Adjustment Range	min. 20 dB, typ.25 dB
Gain Adjustment Step	0.1 dB typ.
Harmonics @ P1 dB-3 dB	< -60 dBc
Spurious	< -80 dBc
Group Delay Varying (linear)	< 0.05ns/MHz with filter
Noise Figure (redundant system)	< 8 dB
Noise Figure (standalone system)	< 3 dB
Intermodulation Distortion @ 47 dBm Pout	< -25 dBc
MTBF	> 130000 Hours
Power supply	230 V; 47-63 Hz

Specifications are subject to change without notice.

# S-BAND OUTDOOR 1:1 REDUNDANT SOLID STATE POWER AMPLIFIER

**Control software summary screen:**



**Outline dimensions (mm):**

