



---

**25 W S-BAND OUTDOOR  
SOLID STATE POWER AMPLIFIER**

- **25 W OUTPUT RF POWER**
- **STABLE OUTPUT POWER OVER TEMPERATURE**
- **LOW NOISE FIGURE**
- **ETHERNET M&C INTERFACE**
- **ROBUST CONSTRUCTION**

This solid state power amplifier is intended for use in S band satellite communications systems as uplink SSPA or driver stage. It is to be installed directly to the antenna. The outdoor construction protects the amplifier against harsh environmental conditions. The SSPA can be fully remotely monitored and control via the built-in Ethernet interface.

**Electrical characteristics:**

Frequency range	2200 - 2300 MHz
RF Output Power @ P <sub>3dB</sub>	min. 44 dBm
Gain	min. 65 dB
Gain Flatness	± 0.5 dB
Gain Adjustment Range	min. 20 dB
Gain Adjustment Step	0.1 dB
ALC Control Range	min. 20 dB
In / Out Impedances Nominally	50 Ω
Input VSWR	< 1.3:1
Output VSWR	< 1.3:1
Output Noise in Band 2200-2300 MHz	< -76 dBm/Hz with filter
Output Noise in Band 2025-2120 MHz	< -135 dBm/Hz with filter
Harmonics @P1dB-3dB	< -60 dBc
Spurious	< -80 dBc
Output Sample	-50 dBc
Noise figure	< 3 dB
Intermodulation distortion (@P <sub>out</sub> =41dBm)	< -28 dBc
MTBF	>130 000 Hours
AC Power Consumption (230V AC) @ P <sub>out</sub> =44dBm	<120W
Operation Temperature Range	-40°C ... +60°C
Dimension (without handlers and connectors)	312 x 364 x 95 mm

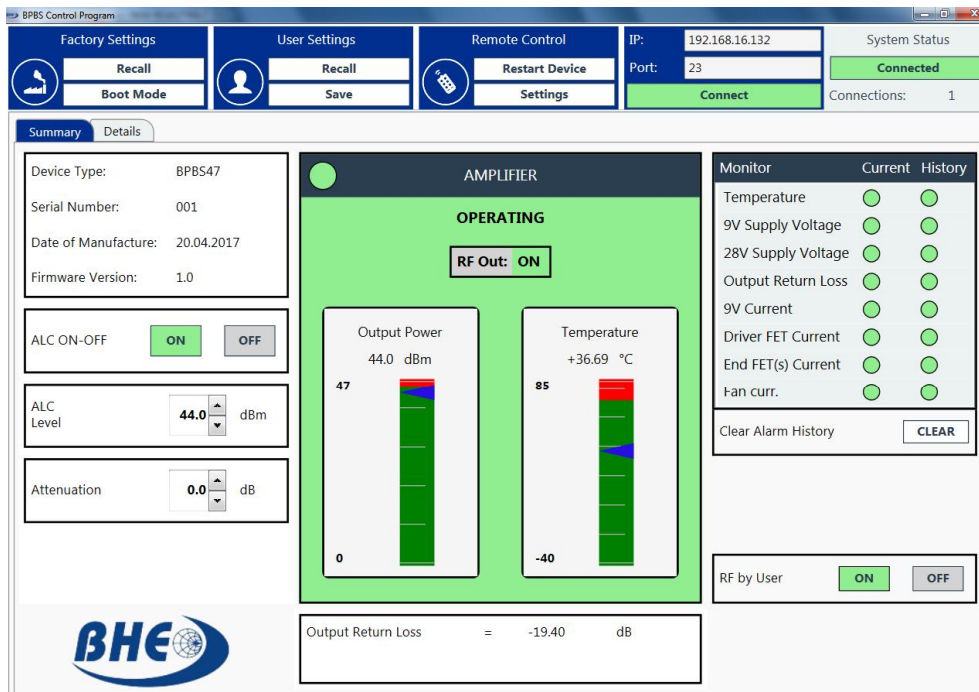
Specifications are subject to change without notice.



BPBS47

## 25 W S-BAND OUTDOOR SOLID STATE POWER AMPLIFIER

### Software screenshot:



### Outline dimensions (mm):

