

**C BAND TEST LOOP TRANSLATOR**

- **EXCELLENT PHASE NOISE PARAMETER**
- **HIGH INPUT / OUTPUT ISOLATION**
- **COMPACT SIZE**
- **ROBUST CONSTRUCTION**

The unit is intended to use as satellite communication test equipment. By the help of BMCD43 the operator can check the RF performance of uplink and downlink path without actual satellite connections. It includes a mixer, filters, amplifiers, programmable attenuators, power level detectors, local oscillator, microprocessor based control circuitry and DC power supply.

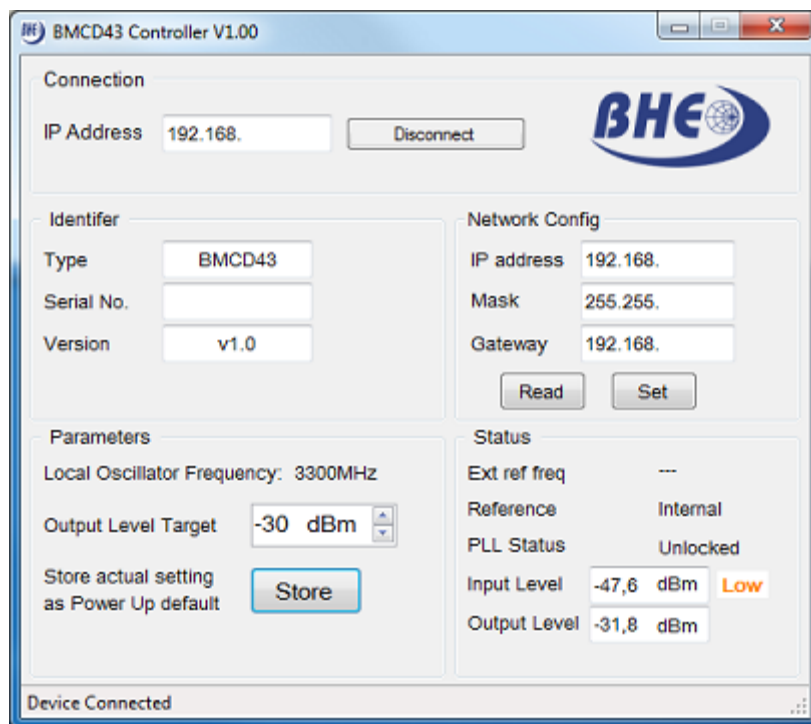
Electrical characteristics:

Input Characteristic	
Input frequency range	6715.5 MHz \pm 15 MHz
Input level range	- 10 to - 40 dBm
Return loss	18dB typ., 15 dB min.
Impedance	50 Ω
Output Characteristic	
Frequency range	3412.5 MHz \pm 15 MHz
Output level range	0 to -60 dBm, programmable in 1dB step The output level is independent from input level, if the input signal is in the specified level range. (AGC)
Return loss	20dB typ., 15 dB min.
Impedance	50 Ω
P1dB	+13dBm min..
Transfer Characteristic	
Gain flatness	\pm 0.5 dB max
Image rejection	> 90 dB
Noise figure	10 dB typ., 15 dB max,
Input / Output Isolation	> 80dB
Group delay variation and stability	< 5nsec
Spurious & Harmonics	-60dBc typ., -50dBc max.
Local Oscillator Performance	
Frequency	3300 MHz, fixed
Reference source	Internal / External, automatic change over
Internal source stability	within \pm 0.01 ppm
Phase noise parameter (typical value)	-77 dBc/Hz @ 100 Hz offset -93 dBc/Hz @ 1 kHz offset -95 dBc/Hz @ 10 kHz offset -107 dBc/Hz @ 100 kHz offset -133 dBc/Hz @ 1 MHz offset
External reference frequency	5 / 10 MHz, automatic selection
External reference level range	- 10 to +10 dBm typ., +10dBm abs max.
Local oscillator test output	-5dBm typ.

**C BAND TEST LOOP TRANSLATOR**

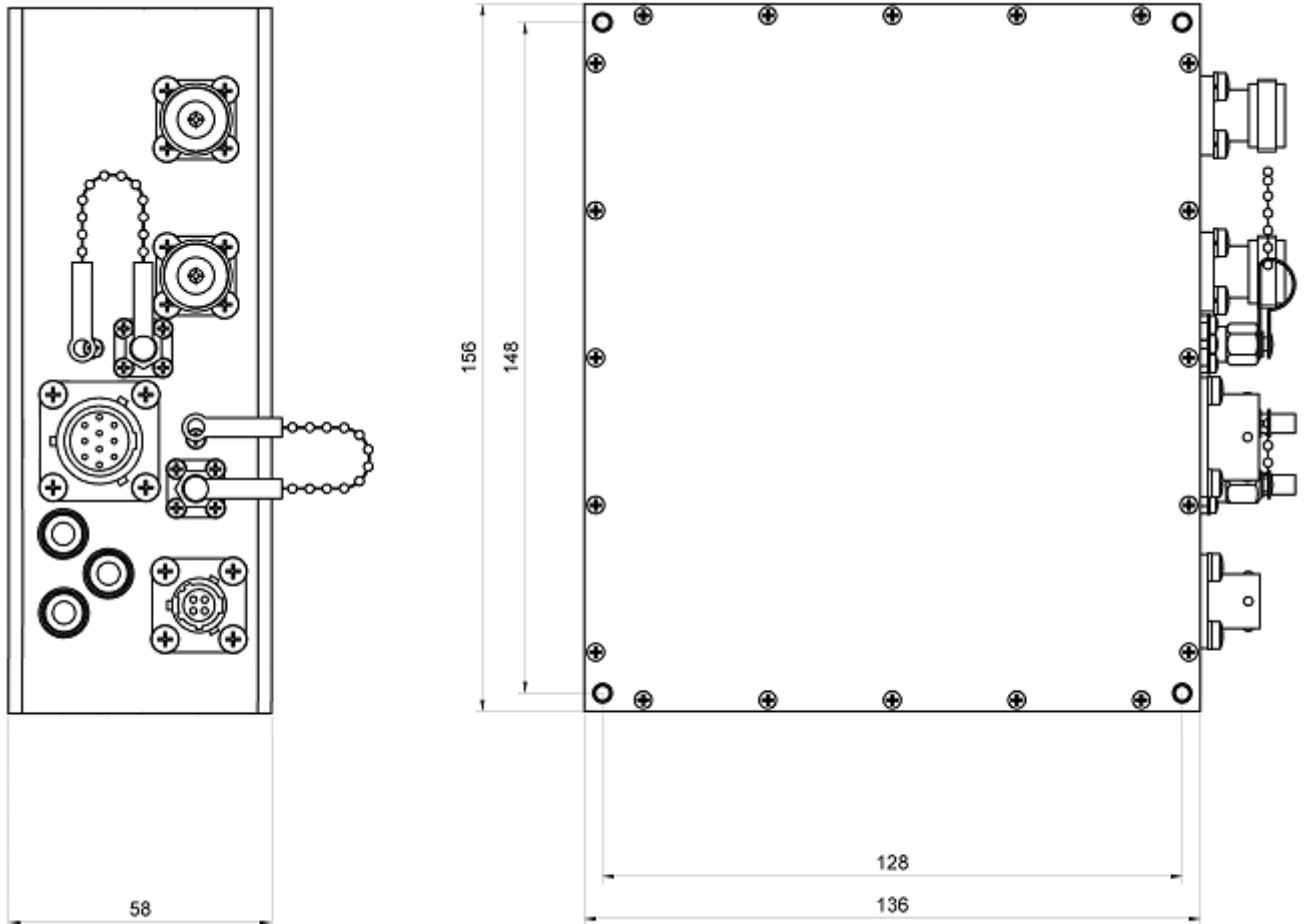
General Parameters	
RF connectors	N-female
Local signal monitor port	SMA-female
External reference input	SMA-female
Power Connector	MS3112E8-3P
Control & Monitor connector	MS3112E12-10S
Control interface	TCP / IP
Power voltage	+ 24 V DC \pm 10%
Current consumption	360 mA max. (operation) 460 mA max (warm-up period)
Operation temperature range	-10°C to +50°C
Construction	Outdoor, IP67
Dimension	136 x 156 x 58 mm (without connectors)
Weight	1.75 kg

Specifications are subject to change without notice.

Graphical User Interface

C BAND TEST LOOP TRANSLATOR

Outline drawing (mm)



BMCD43